



Assessment at Duke: An Introduction to WEAVEonline

Issue 1

5 December 2008

What is WEAVEonline?

WEAVEonline is an online assessment management tool. It was created at Virginia Commonwealth University for the purpose of managing assessment in academic settings, and sharing that information with SACS and other publics. Duke University has purchased a site license for the tool, and has made it available across the institution.

The WEAVE platform works for both academic and administrative units. The systems provides the framework for documenting the assessment in which your area is already engaging. WEAVE is not a data-base. It is a tool that helps you to document and formalize the assessment process.

In addition to creating a framework for assessment, WEAVE has many

other tools that can be beneficial to units across Duke, such as:

- Reporting Functions
- Documentation of Strategic Plans and Mission Statements
- Loading of standards from other accrediting bodies
- Curriculum Mapping
- Annual Reporting
- Allows multiple users
- Narrative format for quantitative or qualitative assessment

WEAVE also archives data to provide a history of continuous improvement.

Steps to Assessment

WRITE EXPECTED OUTCOMES: Identify your area's goals and objectives. What are your intended outcomes?

ESTABLISH CRITERIA FOR SUCCESS: Identify measures, or the evidence that you will use to assess your goals and objectives. Also identify expected outcomes, targets.

ASSESS PERFORMANCE AGAINST CRITERIA: Conduct assessment activities.

VIEW ASSESSMENT RESULTS: Enter and interpret your findings.

EFFECT IMPROVEMENTS THROUGH ACTIONS: This is 'closing the loop.' What did you learn? What will you change in the future? In this step you create action plans based on the current assessment cycle.

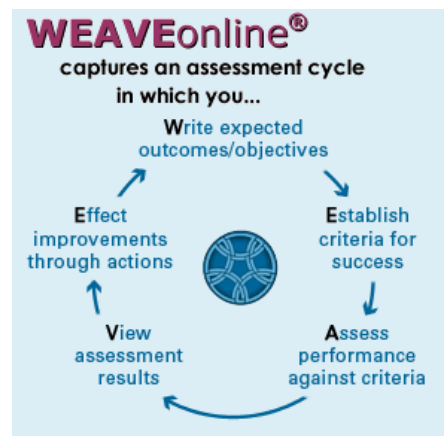
Want to get started in WEAVEonline? Contact Jessica Thornton in the Provost's Office.

Email:
jessica.thornton@duke.edu

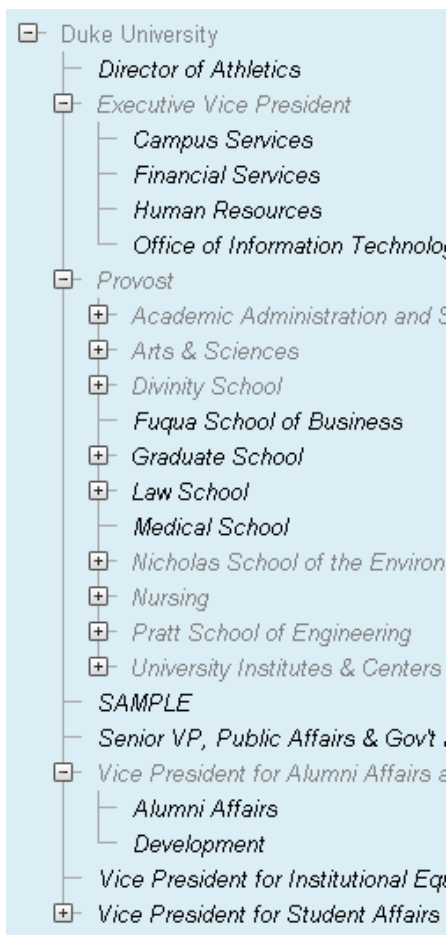
Direct Line:
684-0731

Inside this issue:

What is WEAVEonline	1
Steps to Assessment	1
Why use WEAVE?	2
How does WEAVE work?	2
Getting Started	2



Duke's Hierarchy



Why Use WEAVEonline?

Institutions of higher education are increasingly prompted to document systematic assessment processes. Online tools, like WEAVEonline, have been created to assist institutions in this endeavor.

Duke's accrediting body, the Southern Association of Colleges and Schools (www.sacscoc.org), has included systematic assessment documentation within their compliance requirements. As part of

Duke's recent reaffirmation with SACS, we were required to provide assessment documentation. We have chosen WEAVEonline as a tool to help us in this process.

In light of the new compliance requirements, it is no longer an issue of whether or not to document assessment, but how to document assessment. We hope that you will find WEAVE online easy to use, and a great tool in this process.

How does WEAVE Work?

WEAVE creates a hierarchy, or organization chart, that serves as the basis for all assessment. Working in this hierarchy, units can be 'rolled up' or 'rolled down.' Duke University sits at the top level of the hierarchy followed by the Provost's Office, the Executive Vice President, etc. Entities can be added at any level.

For individual units across Duke, each can decide for themselves if they would like to add lower levels within the hierarchy.

Once the hierarchy is decided, WEAVE creates a network of information, including all assessment entries, which can then be reported in multiple ways.

Getting Started and Using WEAVE

Before using WEAVE, you need to be set up as a user in the system. Please contact Jessica Thornton in the Provost's Office.

In addition to being set up in the system, all users should receive a short session of technical training. These sessions take approximately

30 minutes to one hour in your office. The session is just to familiarize you with the system, and answer any initial questions.

Once in the system, you can find resources at Duke's Assessment webpage (see below). There are also periodic workshops offered to

help, both technically and assessment focused.

If you need additional help, Jessica Thornton is the WEAVE Administrator at Duke and can answer your questions.

Duke's Assessment Page: <http://bpir.provost.duke.edu/assessment.html>

WEAVEonline: <http://app.weaveonline.com/duke/login.aspx>